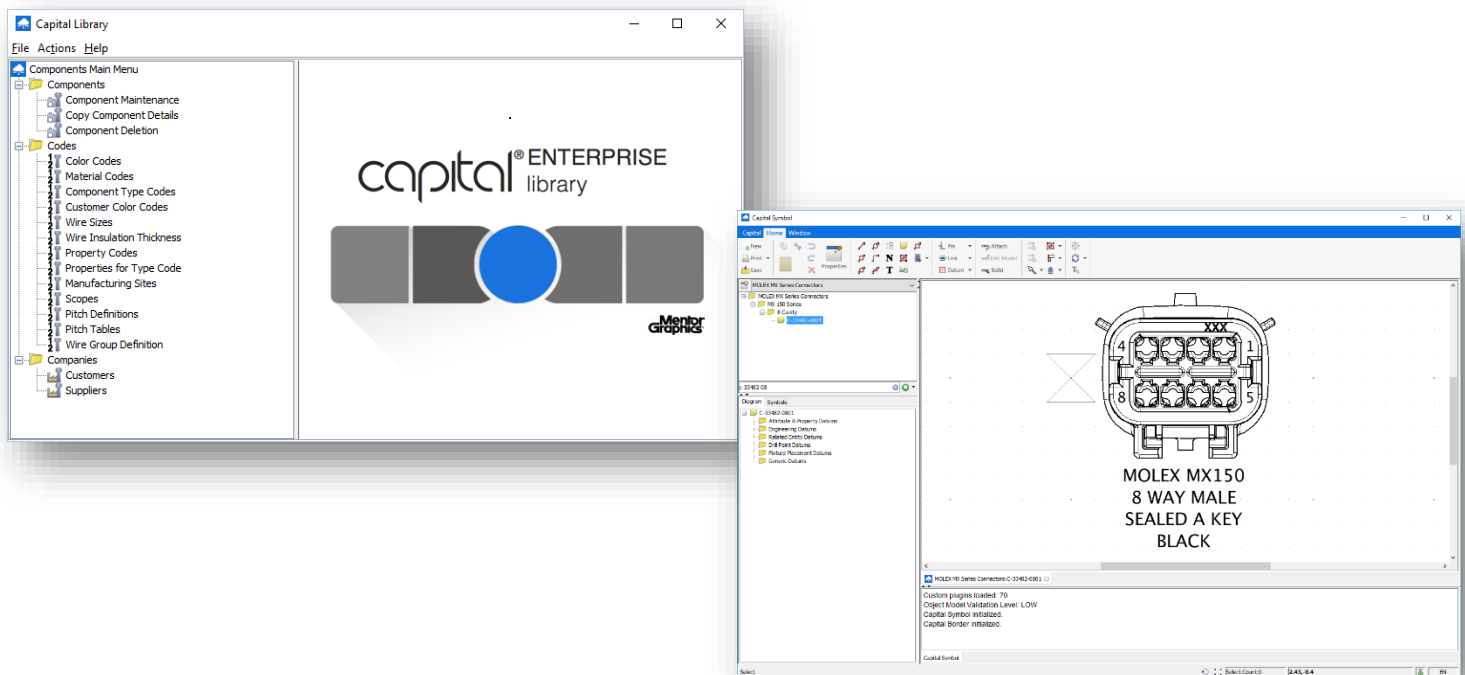


Capital® and VeSys® Services

QuickStart Library Development Service

Use our QuickStart custom library development services to quickly build a solid foundation for your Mentor Graphics Capital® or VeSys® design tools. Your custom Symbol and Component library content will be developed from our constantly growing selection of automotive and aerospace electrical system components. Our master libraries include a comprehensive selection of the wire, cable, and connection systems used in today's increasingly complex electrical system designs. Our library data is constructed to fully leverage Capital® and VeSys® industry leading features and strategies. Our QuickStart library data will help you achieve the full potential of your investment and serve as a template for future growth. We truly understand the reluctance when it comes to changing processes or implementing software, but our experienced team of application engineers make the process simple, understandable and repeatable, so you can stand on your own faster. As new processes come up and the software needs to adjust, we will be there to help you in making those modifications.



Component Library

Based on your unique requirements, we will provide a **QuickStart** custom library of component parts (i.e., wires, connectors, terminals, boots, insulation, clips, etc.) that can be used in designs created in Capital® and VeSys® design tools. Your library will also contain the wire and multicore cable that you specify. Connectors are configured to include typically used mandatory and optional "Housing" parts such as terminals, cavity plugs, boots, seals, and mounting hardware. Cavity names, cavity attributes and mating information is also provided.

Common Unit of Measurement (UOM)

Oasis maintains 3 master libraries.

1. Metric UOM – Automotive
2. Imperial UOM – Automotive
3. Imperial UOM – Mil-Aero

Metric UOM Length attribute values are in millimeters and Weight attribute values are in grams.

Imperial UOM Length attribute values are in inches and Weight attribute values are in ounces.

Codes

Component Library “Codes” (such as color, wire size, material, wire size, wire insulation size, and wire groups) provide an essential foundation for the components that will be configured in the library.

Color Codes: Default is 2 characters (BK = Black)

Material Codes: Common Abbreviations are used

Wire Groups: Used to define groups of wires that meet terminal and seal constraint specifications ²

Component Part Numbers

Capital® / VeSys® libraries support 3 categories of part numbers for each component. Powerful search and reporting capabilities allow the user to quickly find and report components by any of the supported part numbers.

Internal Part Number – Required – Oasis utilizes the original Manufacturers’ Part Number as the *Internal Part Number*.

Supplier Part Number – Oasis enters the original Manufacturers’ Part Number as the “preferred” *Supplier Part Number*.

Distributor part numbers may also be provided as an alternate *Supplier Part Number*. Customers can add additional *Supplier Part Numbers* and change the desired “preferred” designation.

Customer Part Number – Oasis does not populate this category, but customers can enter their own *Part Number* for components. Wire harness manufacturers can enter multiple *Customer Part Numbers*.

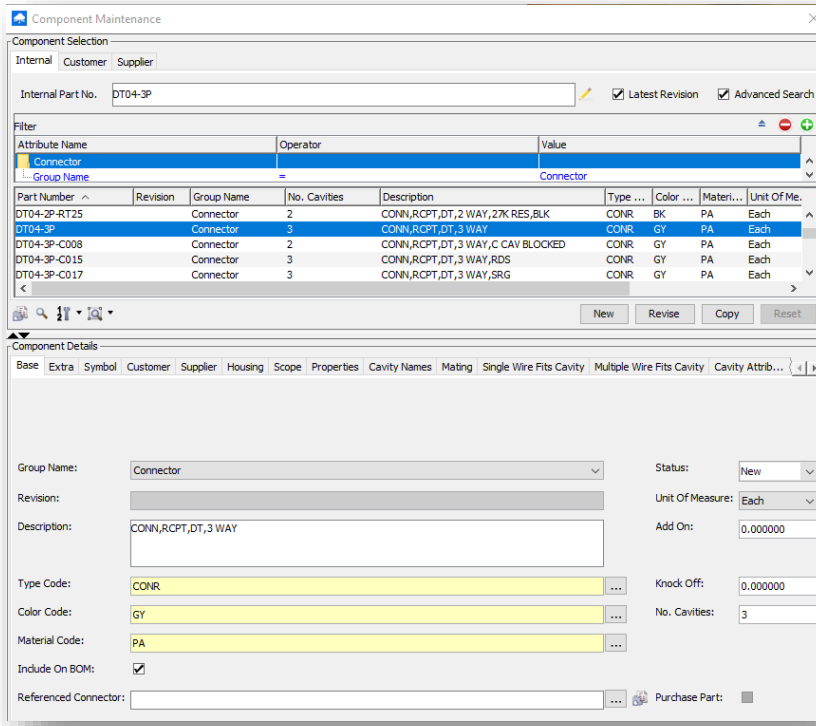
Attribute Name	Operator	Value
Wire Size		
Material Code	=	
CSA	>=	0.0
Specification	starts with	

Material Code	Specification	CSA	Wire Usual	Outside Diameter
GXL	14	2.0	<input type="checkbox"/>	2.755769
GXL	16	1.0	<input type="checkbox"/>	2.288379
GXL	18	0.8	<input type="checkbox"/>	2.169253
GXL	20	0.5	<input type="checkbox"/>	1.957885
GXL	6	13.0	<input type="checkbox"/>	6.248429
GXL	8	8.0	<input type="checkbox"/>	5.071538
HTS	10	4.65	<input type="checkbox"/>	4.773221
HTS	12	2.91	<input type="checkbox"/>	4.264871

Material Code: GXL
Specification: 20
CSA: 0.500000 Wire Usual

Status

A component's *Status* indicates whether the component can be selected for use. Options are *New*, *Current*, and *Obsolete*. Oasis enters the status of "New" for all components. Customers can change the status to "Current" upon validation and approval for use in their designs.



Connectors

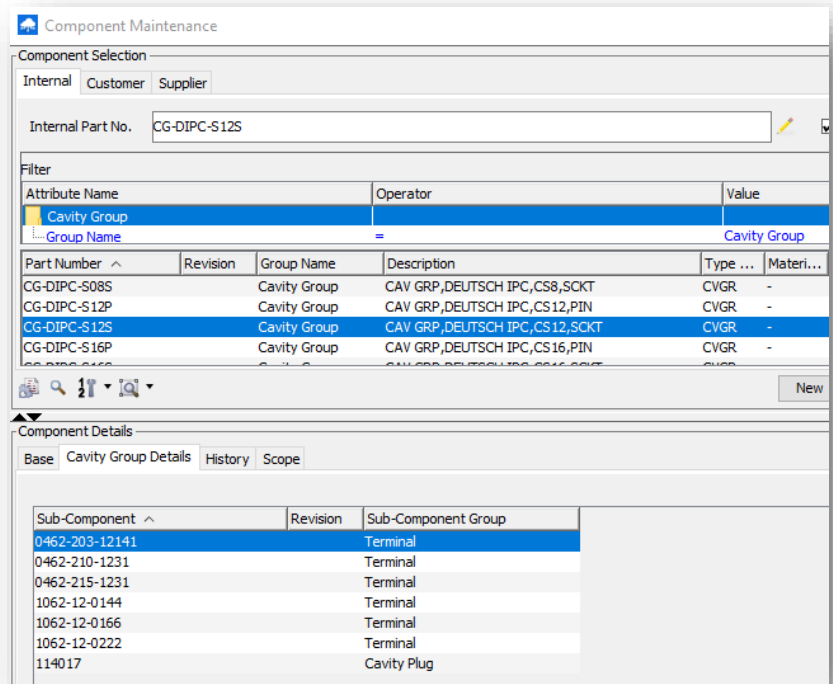
Connector group components are populated per the manufacturer's specifications. Cavities are named and the mating connector(s) are designated. Part numbers are developed for typically used housing components and added to the *Housing* tab (i.e., locks, seals, terminals, cavity plugs).

Values for Add On, Knock Off and Dressed Routes are typically not provided unless they are included in the manufacturer's drawings or specifications.

Cavity Groups

Cavity Groups are utilized to manage multiple housing component options for connectors. A Cavity Group serves as a "Container Part" for a set of cavity components (for example, terminals, cavity seals and cavity plugs).

Future maintenance is simplified because it is easier to update a few cavity groups than multiple connector part numbers.



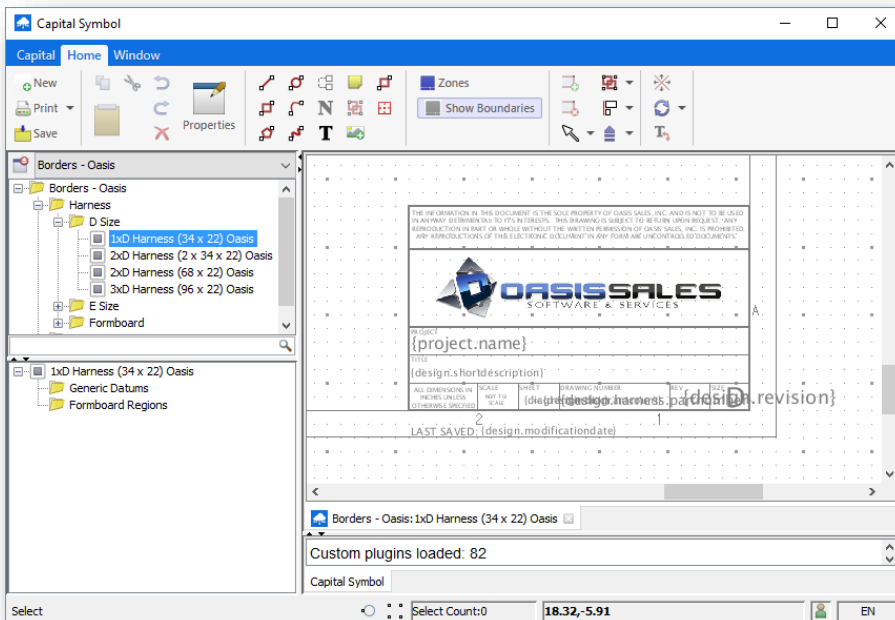
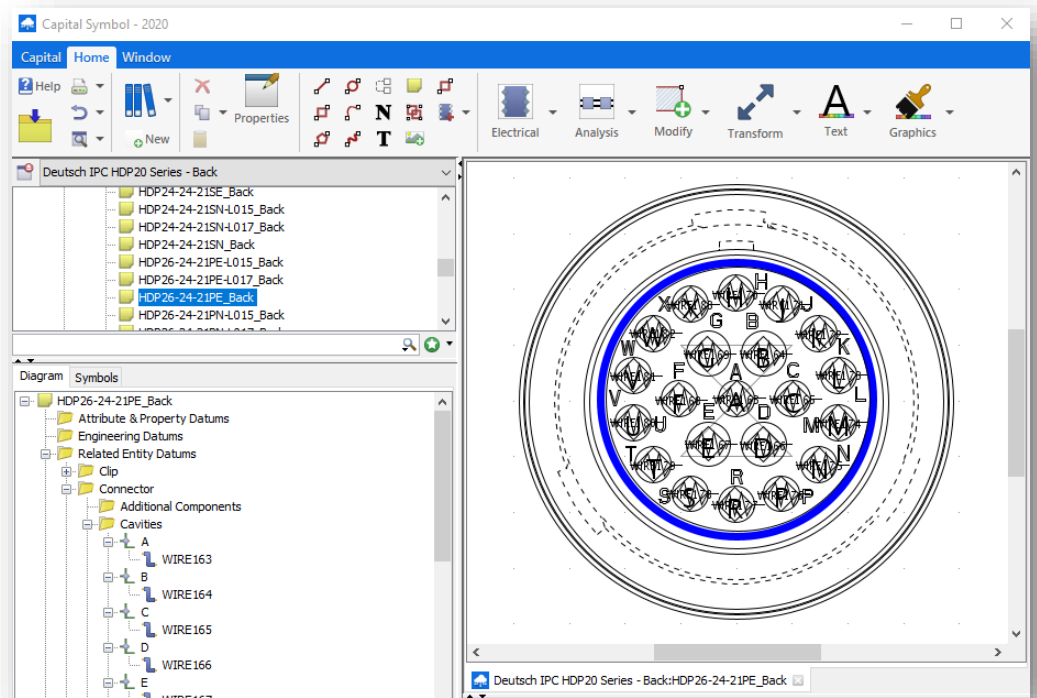
Symbol Libraries

Our connector and border symbol libraries can be purchased to complement your existing Component Library or be used in conjunction with a purchased custom Component Library.

Connector and Ring Terminal Symbols

Connector and Ring Terminal symbols are based on graphic files provided by the connector manufacturer (when available). The symbols depict the back (wire insertion), front (face), and profile view perspective. Cavities are labeled per the manufacturer's specifications and RED (Related Entity Datums) are included.

Each connector is identified by the manufacturer's part number with a *_Back*, *_Front*, or *_Profile* suffix added. Symbols are arranged in a hierarchical tree format.



Border Symbols

QuickStart Libraries include a Oasis border library that can be used as a template. Custom borders and title blocks can be developed to meet your corporate documentation requirements. Property value placeholders are utilized to automate the addition of project and drawing specific information on your designs.

Your Unique Requirements

Capital® and VeSys® design tools are used in a wide variety of applications. Accordingly, each **QuickStart** custom library implementation is unique. Custom Symbol and Component libraries are developed from our **master libraries** of popular wiring connector systems and components.



Currently Available Components*

Each Connector or Ring Terminal component includes a graphic symbol.

Wire and Cable Options*

We offer a wide selection of Mil Spec, SAE, Marine and UL wire and cable options with each **QuickStart** library.

Samples*

Sample Symbol and Component Library XML files are available for your review.

*Contact your Oasis Sales Account Manager or Jay Cink for more information.

Additional Services Offered

Custom Report Java Programming Service

We develop custom Java based Plug-in software to extend the “Out of Box” reporting capabilities of **Capital®** and **VeSys®**. Custom Java programming can be used to add BOM fields or interface with wire processing equipment. Source code is provided.

Consulting and Training Services

Ask about our consulting and training services. We can help insure your return on investment with library and style set configuration assistance, library management tips, and best practice advice.

Utilization of our QuickStart component and symbol library services will allow your valuable engineering resources to remain focused on design projects, not library building. Ultimately, our library management expertise will get you started quickly on the road to a successful and productive **Capital®** and **VeSys®** deployment.

Oasis Sales truly stands out in this landscape not only for the breadth of our offerings but also for our decades-long track record with companies just like yours!

Let us put our drive and expertise to work for you!

Contact me for more details:

Jay Cink
(785) 556-1142
Jay.Cink@OasisSales.com
www.oasissales.com

Acknowledgements and Disclaimer

Copyright 2021 Oasis Sales, Inc. All rights reserved. Trademarks, logos and any other proprietary marks displayed are the property of Oasis Sales or their respective owners. Capital® and VeSys® are registered trademarks of Siemens Digital Industries Software. Oasis Sales reserves the right to retain all graphics, component data and programming code generated other than proprietary customer information. No part of the software and documentation may be reproduced, translated, used, distributed, disclosed, or provided to third parties without the prior written consent of Oasis Sales.

Consult the latest Capital® or VeSys® *Components User Guide* for a complete understanding of the process before importing component parts and codes into an existing library.

The software and documentation are provided "as is" without warranty or support of any kind. Oasis Sales offers no express or implied warranties and specifically disclaims any warranty of merchantability, fitness for a particular purpose, or warranty of non-infringement. In no event shall Oasis Sales be liable for direct, indirect, special, incidental, or consequential damages (including lost profits or savings) whether based on contract, tort, or any other legal theory, even if Oasis Sales has been advised of the possibility of such damages. Oasis Sales is not responsible for any technical issues that may arise due to the use of obsolete parts and / or graphic symbols. In no event will Oasis Sales liability whether in contract, tort (including negligence), or otherwise, exceed the amount paid for library content.

01/21

