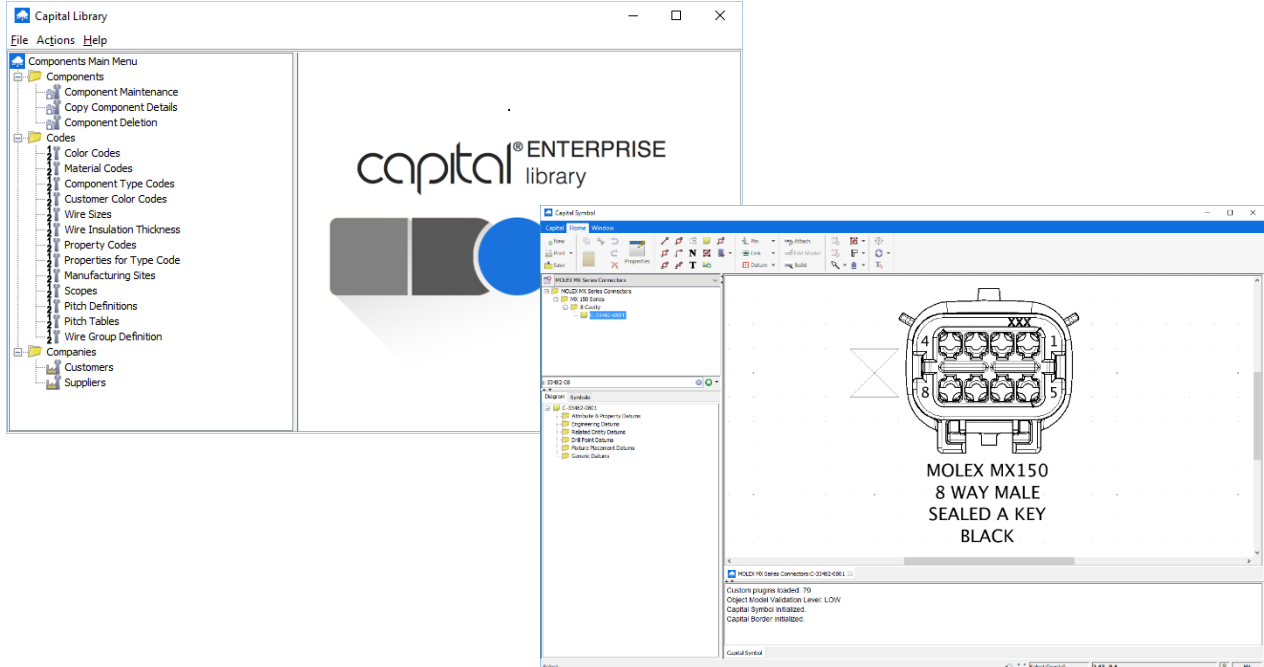


Mentor Graphics Capital[®] and VeSys[®] QuickStart Library Development and Maintenance Service

Use our *QuickStart* custom library development service to quickly build a solid foundation for your Mentor Graphics Capital[®] or VeSys[®] design tools. Your custom Symbol and Component library content will be assembled from our ever growing selection of automotive and aerospace electrical system components. Our master library includes a comprehensive selection of the wire, cable, and connection systems used in today's increasingly complex designs. Our data is constructed using advanced Capital[®] and VeSys[®] library features and strategies that will help you achieve the full potential of your investment and serve as a template for future growth.



Component Library

Based on your requirements, we will provide a *QuickStart* custom library of component parts (i.e. wires, connectors, terminals, boots, insulation, clips, etc.) that can be used in designs created in Capital® and VeSys® 2.0 design tools. The library will contain the wire and multicore cable that you specify. Connectors are configured to include typically used mandatory and optional “Housing” parts such as terminals, cavity plugs, boots, seals, and mounting hardware. Cavity names, cavity attributes and mating information is also provided. The following library design features and default specifications are used.

Common Unit of Measurement

The library unit of measurement is **metric**. Length values are in **millimeters** (mm) and weight values are in **grams**. Note that the use of metric units in the library does not prevent the use of imperial units in design projects.

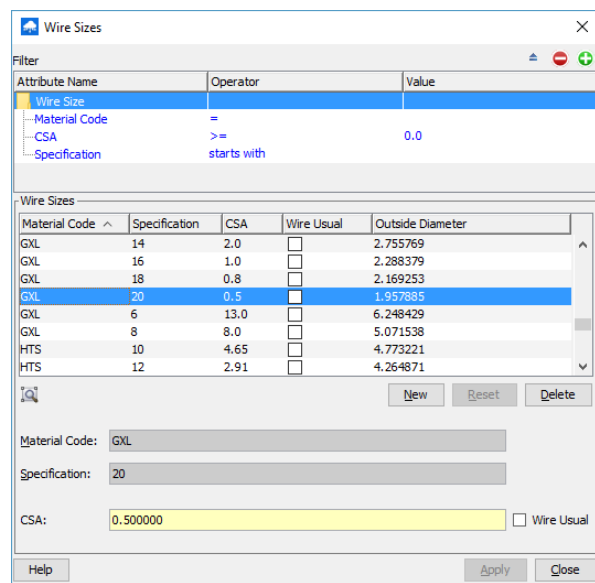
Codes

Component Library “Codes” (such as color, wire size, material, wire size, wire insulation size, and wire groups) provide an essential foundation for the components that will be configured in the library.

Color Codes: Default is 3 characters (BLK = Black)¹

Material Codes: Common Abbreviations are used¹

Wire Groups: Used to define groups of wires that meet terminal and seal constraint specifications²



Component Part Numbers

Components are typically identified by multiple part numbers. Capital® and VeSys 2.0 design tools have powerful search and reporting capabilities that support the following strategy for assigning component part numbers.

Internal Part Number: Default is component manufacturer’s part number with a “category” prefix^{3, 4}

Customer Part Number(s): The customer’s part number assigned to the component⁴

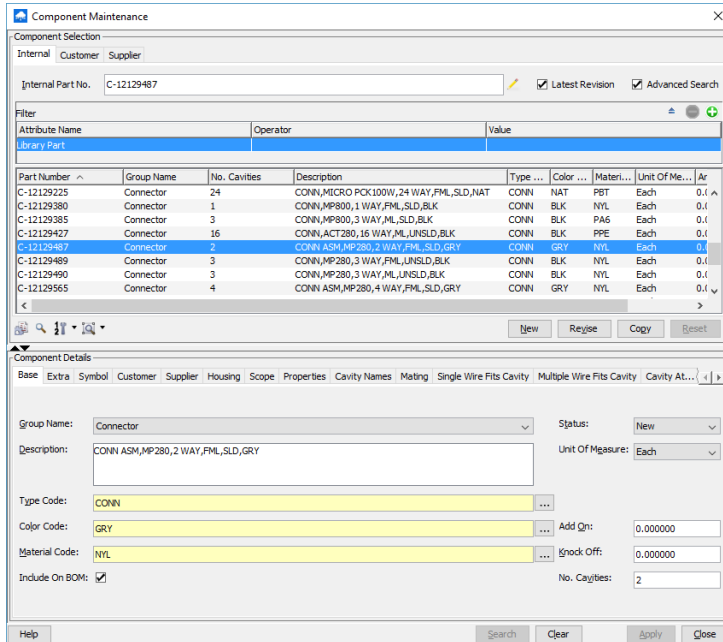
Supplier Part Number(s): Manufacturer’s and/or distributor part numbers assigned to the component^{2, 5}

Status

The “status” of all components is “New”.

Notes:

1. Up to 4 characters are allowed.
2. Can be modified by the end user.
3. Internal part numbers can be modified by the end user if they have not yet been used in a design project.
4. Can be preloaded if provided by the customer (additional cost).
5. Manufacturer’s part number will be listed as the “Preferred” supplier unless otherwise specified (can be modified by the end user).



Connectors

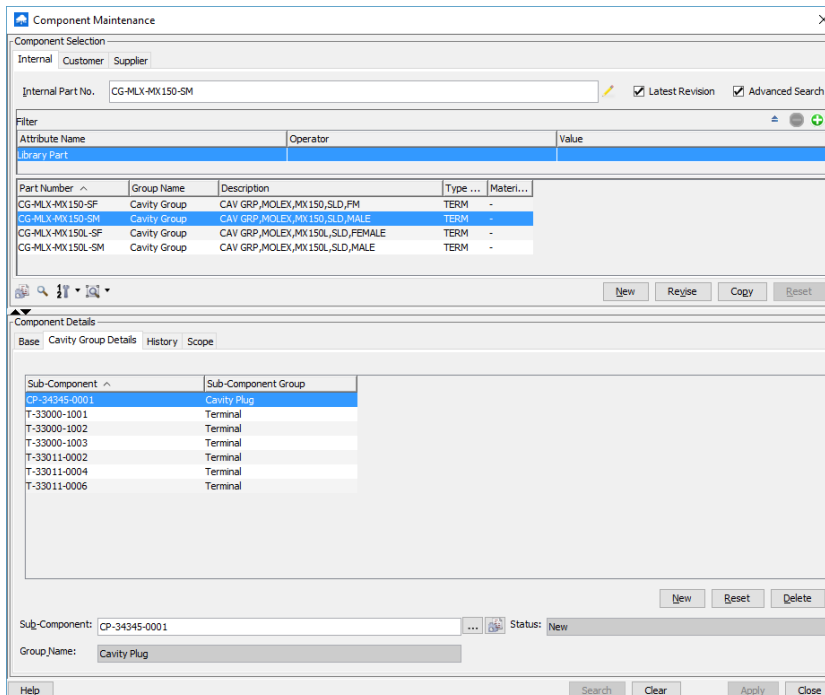
Connector group components are populated per the manufacturer's specifications. Cavities are named and the mating connector(s) are designated. Part numbers are developed for typically used housing components and added to the *Housing* tab (i.e. locks, seals, terminals, cavity plugs).

Values for Add On, Knock Off and Dressed Routes are typically not provided unless they are included in the manufacturer's drawings or specifications.

Cavity Groups

Cavity Groups are utilized to manage multiple housing component options for connectors. A Cavity Group serves as a "Container Part" for a set of cavity components (for example; terminals, cavity seals and cavity plugs).

Future maintenance is simplified because it is easier to update a few cavity groups than many connector part numbers.



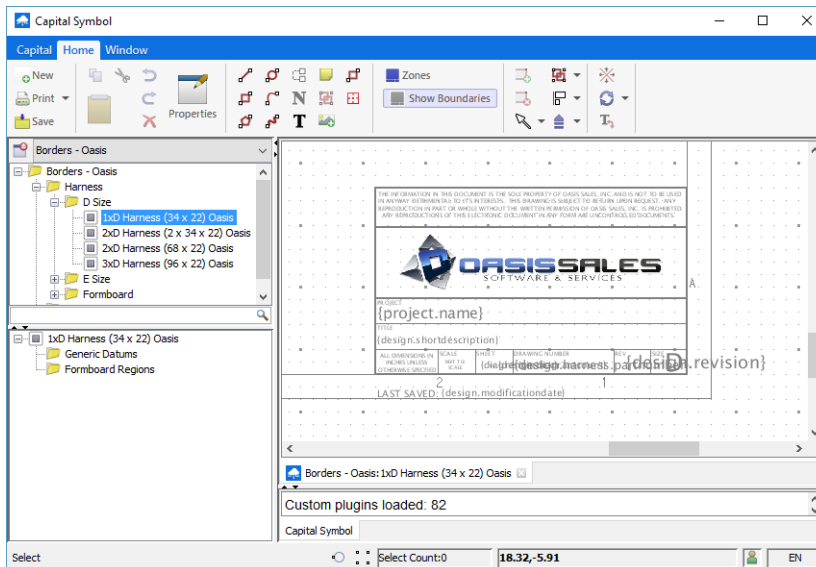
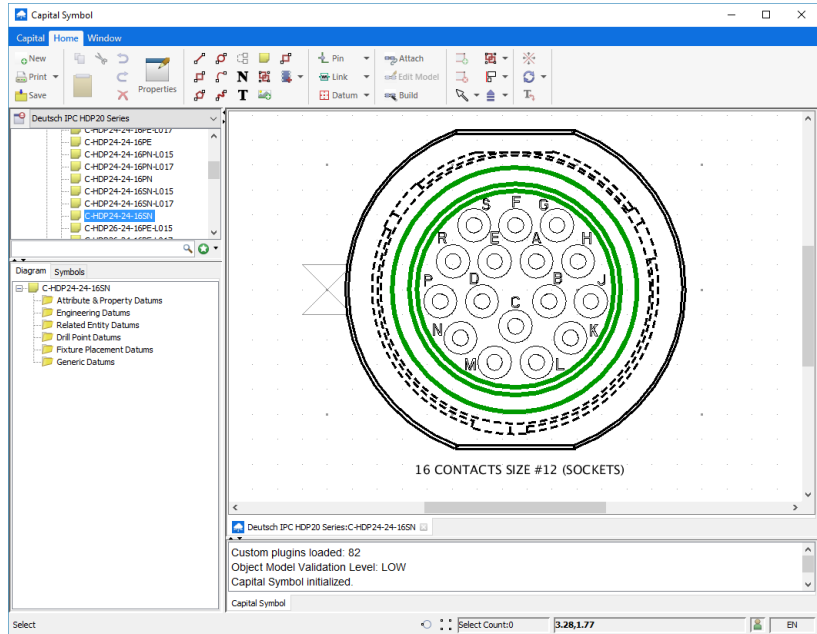
Symbol Libraries

Our connector and border symbol libraries can be purchased to complement your existing Component Library or be used in conjunction with a purchased custom Component Library.

Connector Symbols

Connector (comment) symbols are based on graphic files provided by the connector manufacturer (when available). The symbols depict the connector outline and each cavity from the wire insertion perspective (minimum). Cavities are labeled per the manufacturer's specifications.

Each connector is identified by the manufacturer's part number with a "C" prefix and arranged in a hierarchical tree format. A separate library file is created for each connector manufacturer for ease of maintenance.



Border Symbols

Custom drawing frame and title block (border) symbols can be developed to meet your corporate documentation requirements. Property value placeholders are utilized to automate the addition of project and drawing specific information on your designs.

Your Unique Requirements

[Capital®](#) and [VeSys®](#) design tools are used in a wide variety of applications. Accordingly, each *QuickStart* custom library implementation is unique. Custom Symbol and Component libraries are developed from our growing **master library** of popular wiring connector systems and components.



Currently Available Connectors

Contact your Oasis Sales Account Manager for a listing of currently available connector selections and pricing. Each connector includes a graphic symbol (typically wire insertion view) and commonly used terminal, cavity seal, cavity plug, and secondary lock options.

Wire and Cable Options

We offer a wide selection of SAE, Marine and UL wire and cable options with each *QuickStart* library.

Custom Connector Development

We will develop library components and symbols that are not included in our master listing. See “Library Maintenance Service” on the next page for more information. Contact your Oasis Sales Account Manager with your requirements.



Samples

Sample Symbol and Component Library XML files are available for your review. Contact your Oasis Sales Account Manager for more information.

Library Maintenance Service

We offer a flexible library maintenance service that will help keep your design resources focused on project completion. Simply provide us with a periodic listing of your library requirements and we will provide the updates necessary to help keep your design process flowing at peak efficiency.

Custom Report Programming Service

We develop custom Java based Plug-in software to extend the "Out of Box" reporting capabilities of Capital® and VeSys 2.0. Custom programming can be used to add BOM fields or interface with wire processing equipment. Source code is provided.

Consulting and Training Services

Ask about our consulting and training services. We can help insure your return on investment with library and style set configuration assistance, library management tips, and best practice advice.

Utilization of our QuickStart component and symbol library services will allow your valuable engineering resources to remain focused on design projects, not library building. Ultimately, our library management expertise will get you started quickly on the road to a successful and productive [Capital®](#) or [VeSys®](#) implementation. Contact us today or [visit our web](#) site for a more information about our services.

Acknowledgements and Disclaimer

Copyright 2016 Oasis Sales, Inc. All rights reserved. Trademarks, logos and any other proprietary marks displayed are the property of Oasis Sales or their respective owners. Mentor Graphics®, Capital® and VeSys® are registered trademarks of Mentor Graphics Corporation. Oasis Sales reserves the right to retain all graphics, component data and programming code generated other than proprietary customer information. No part of the software and documentation may be reproduced, translated, used, distributed, disclosed or provided to third parties without the prior written consent of Oasis Sales.

Consult the latest Capital® or VeSys 2.0 *Components User Guide* for a complete understanding of the process before importing component parts and codes into an existing library.

The software and documentation is provided "as is" without warranty or support of any kind. Oasis Sales offers no express or implied warranties and specifically disclaims any warranty of merchantability, fitness for a particular purpose, or warranty of non-infringement. In no event shall Oasis Sales be liable for direct, indirect, special, incidental, or consequential damages (including lost profits or savings) whether based on contract, tort or any other legal theory, even if Oasis Sales has been advised of the possibility of such damages. Oasis Sales is not responsible for any technical issues that may arise due to the use of obsolete parts and / or graphic symbols. In no event will Oasis Sales liability whether in contract, tort (including negligence), or otherwise, exceed the amount paid for library content.